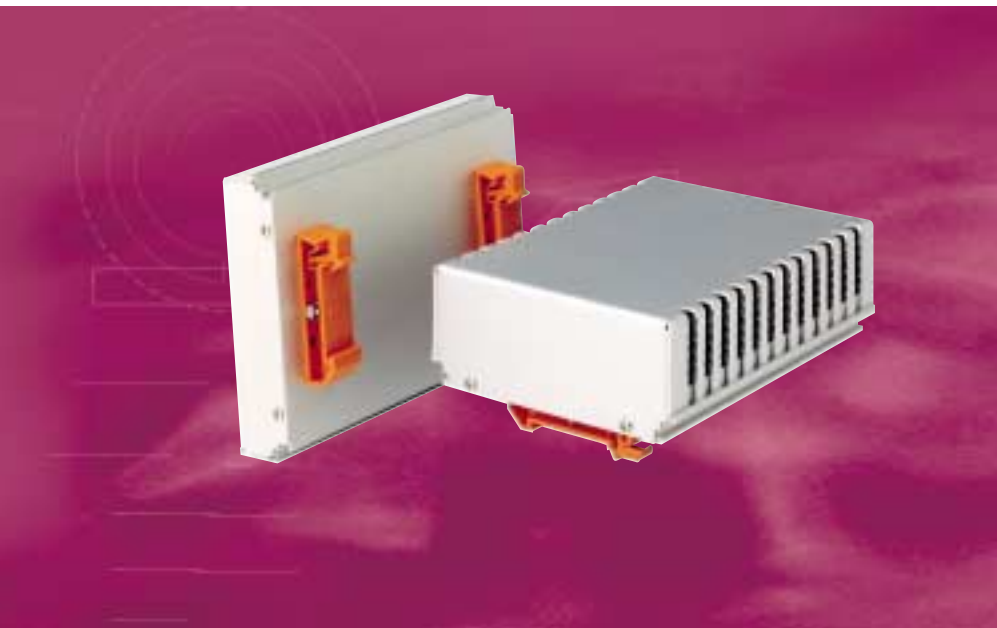




## 420 • DIN rail case



### DIN rail case

- stable and convenient clip device for mounting on DIN rails
- easy assembly
- cost-effective

#### Application:

for 100mm x 160mm and  
100mm x 220mm Europe cards

#### Construction:

Aluminium extrusion rear panel,  
aluminium panel cover shells  
and PA 6 plastic DIN rail clips

#### Finish:

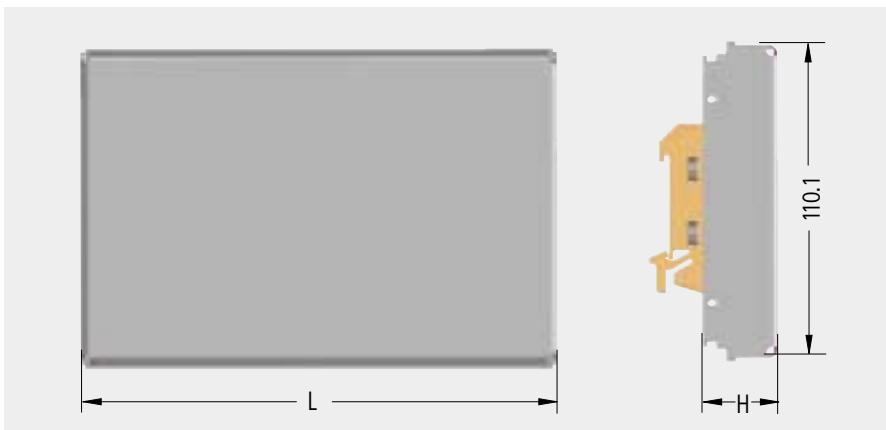
RAL 7035 light grey  
transparent chromated interior

#### Degree of protection:

IP 30

#### Delivery:

not assembled



### Order information

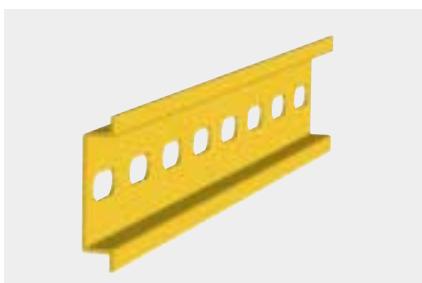
Length L mm	Height H mm	PCB size mm	Part no.
163.5	26	100 x 160	42-0001-00
223.5	26	100 x 220	42-0001-10
163.5	46	100 x 160	42-0002-00
223.5	46	100 x 220	42-0002-10

### Included in delivery

Item	Pc.	Description
1	1	Cover shell
2	1	Rear panel
3	2	DIN rail clips
4		Assembly material

### Accessories

#### DIN rail



**Material:**  
steel, galvanized

Type	Length mm	Part no.
NS 35 7.5	200	64-0236-02
NS 35 7.5	600	64-0236-08

#### DIN rail clip



Part no.
442-311